

**ORICARE™**  
Your healthcare, we care.



## *L2700 Series Operating Room Lamps*

**ORICARE™**

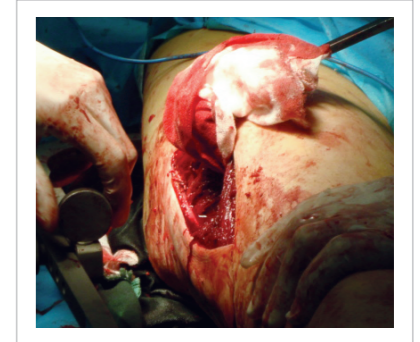
Oricare Inc.  
1900 AM Drive  
Quakertown, PA 18951 USA

Tel: +1-215-538-2470  
Fax: +1-215-538-2578  
[www.oricaremed.com](http://www.oricaremed.com)



### Warm-white LED lighting produces low IR and zero UV radiation

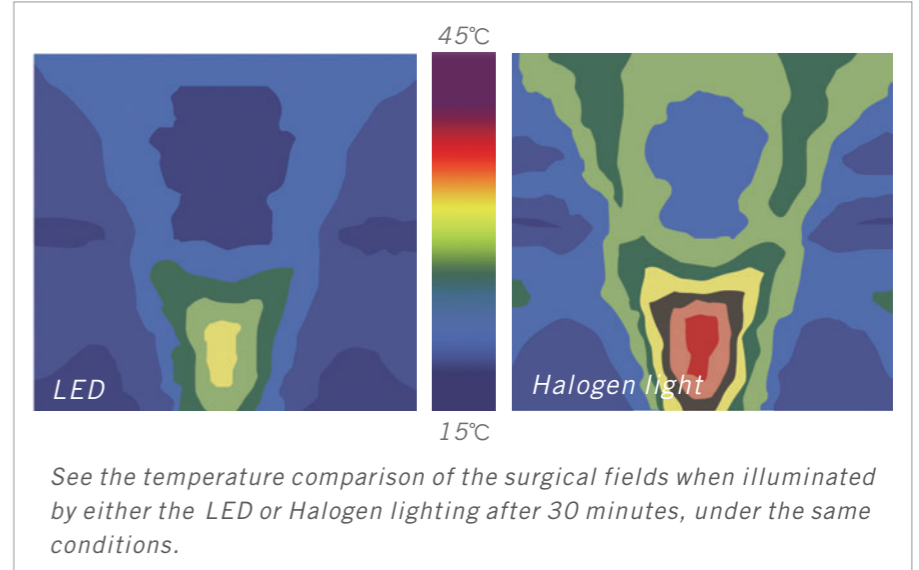
Oricare L2700 Operating Room Lamps have low Infrared and UV-free radiation, thanks to the warm-white LED light source. This can prevent the desiccation of exposed tissue and prolong tissue life, which can result in accelerated post-surgical wound recovery. Additionally, it creates a cooler work environment for you and your staff



■ The design of the Oricare L2700 Operating Room Lamps is based on the leading LED technology. Our advanced optics create bright light which forms an absolutely shadowless lighting environment and meets the requirements of many different surgical procedures. With our unique patented shadowless optics, outstanding lighting depth, natural light color rendering and recovery capability and an ultra-long working life, the Oricare L2700 series is now the best choice in surgical illumination.

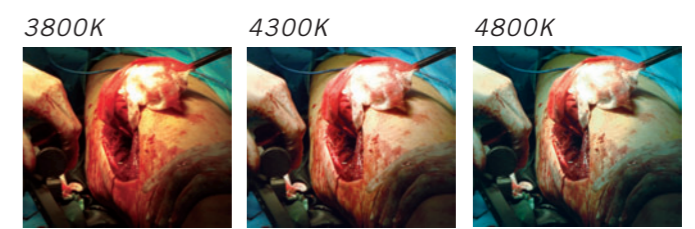
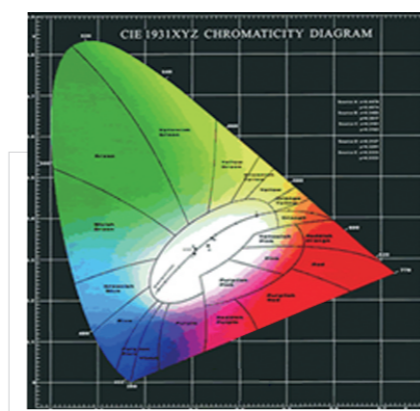
### Oricare is the first manufacturer who applies the warm-white LED compound solid-state light source to the Operating Room.

The light output from a warm-white LED source is very close to natural daylight, which gives the surgeon exceptional visualization and comfort during longer procedures. Warm-white LED light sources meet the requirements of the most advanced surgical lighting demands by including technology and features such as: cold power-up, no pre-heating, short response time on re-boot ( $1 \times 10^{-9}$  second), powered by direct current (DC), stroboflash-free, and long life (50000 hours). The solid-state light source is durable and resistant to physical shock. The Oricare L2700 Series OR Lamps include no hazardous substances, have high illuminating efficiency, and good pointing capability.



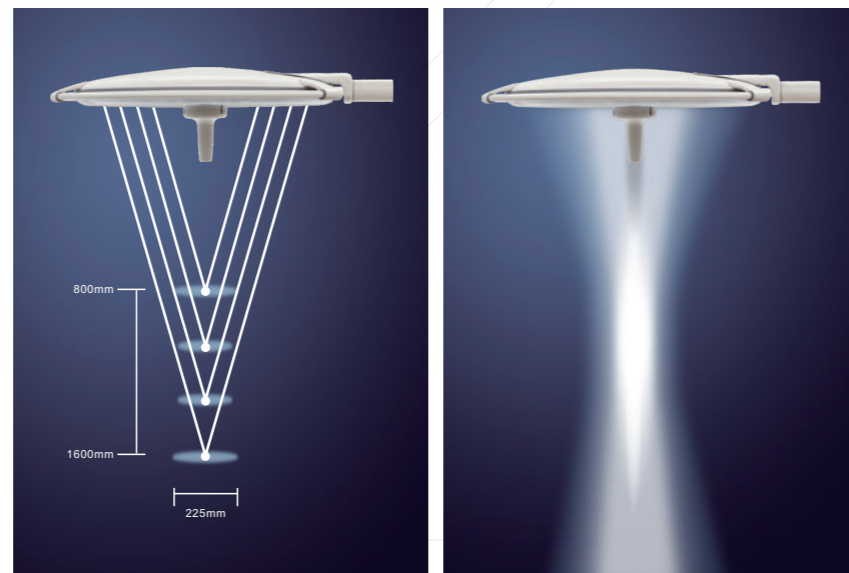
### Excellent color rendering capability, similar to natural light

Oricare L2700 Operating Room Lamps have outstanding color rendering index. The LED light covers almost the entire visible color spectrum required for demanding surgeries. Better rendering index and clear tissue visualization can help the surgeon to distinguish between pathological and healthy tissue, and gives them unparalleled comfort and a fatigue-free operating experience.



*Patented light path design,  
no need for manual focus adjustment*

*Oricare L2700 Series Operating Room Lamps include patented focus adjustment technology which provides an abundant and uniform lighting field. 250mm light cylinder diameter and 800mm light depth provide an effective illuminating solution for most surgery situations, including surgery of a large wound area.*



*The lamp head is composed of multiple groups  
of individual light sources, which are controlled  
separately.*

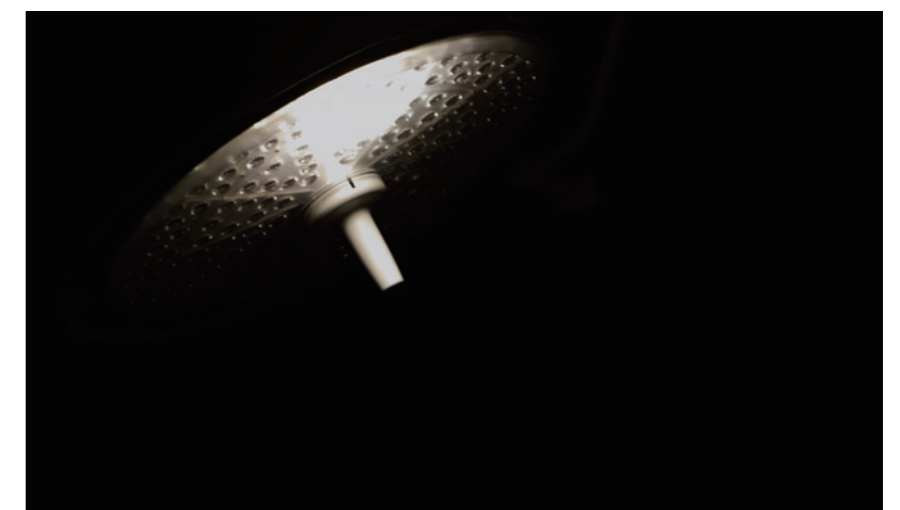
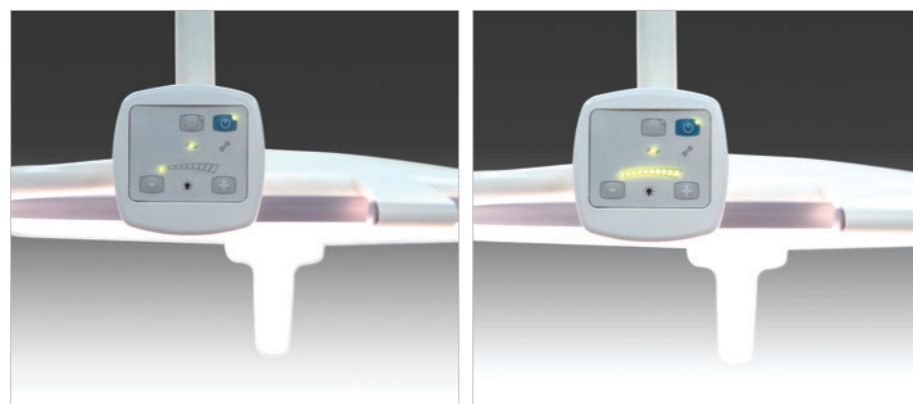
*Failure of an individual light source group will not cause the whole light to malfunction, because each group is controlled by an independent electrical control system. This design prevents sudden failure of the complete light system and increases surgical safety.*

*Smart background light gives basic illumination  
for endoscopic surgery.*

*Two independent LED elements give basic environmental illumination for low-light settings like endoscopic surgery.*

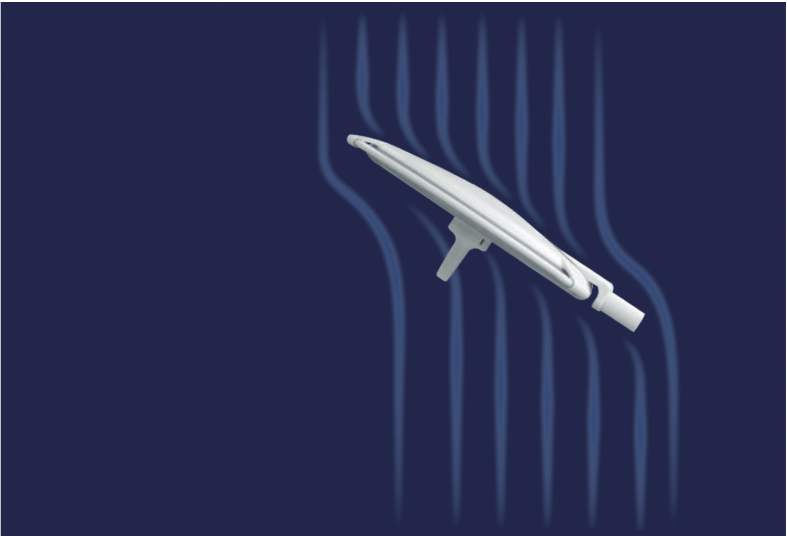
*The illumination consistency is controlled by microprocessor  
technology, with ten-levels of illumination output adjustment  
(30% - 100%) available to the clinician.*

*Equipped with advanced dynamic adjustment software, the Oricare L2700 Series Operating Lamps emit steady and consistent light and keep the illumination constant, which is very important for each operation. It also has a 10 level illumination adjustment function which fulfill s the demands of different kinds of operations.*



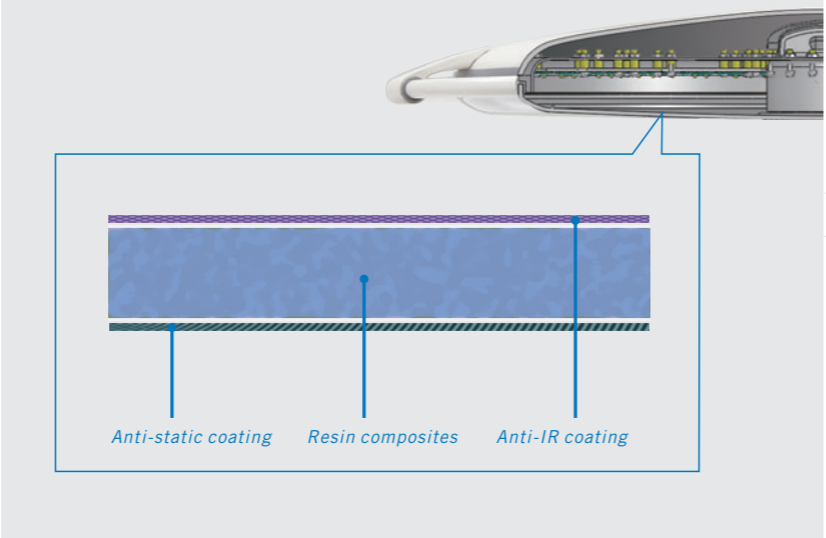
*Ultra-thin with a streamlined appearance*

*Benefiting from LED light technology, Oricare L2700 Series Operating Lamps do not require the massive reflection body and related complex heat-insulation system of traditional Halogen light systems. Slim and compact, with low wind resistance and a flow-optimized appearance, Oricare L2700 minimizes turbulence in laminar air flow. Therefore, the laminar flow can reach the surgical wound area consistently, avoiding possible cross-infection.*

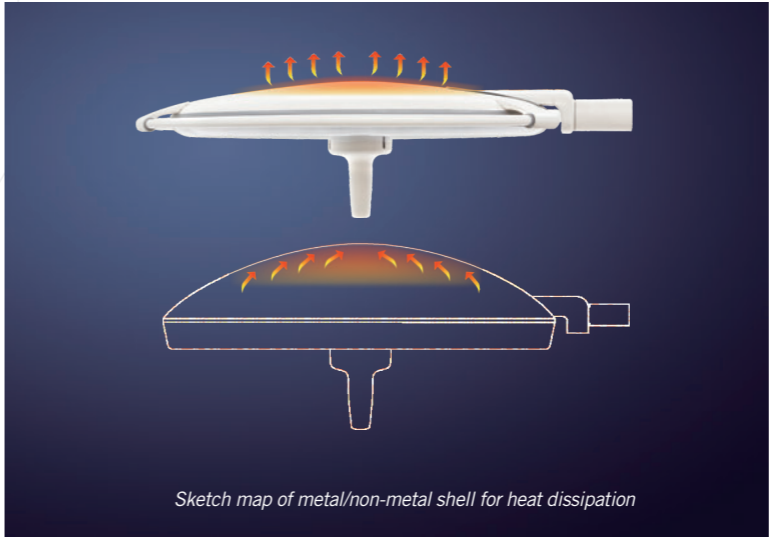


*Light screen is anti-infrared and scratch-proof.*

*The transparent light screen of Oricare L2700 Operating Room Lamps is made of a durable and cleanable synthetic resin. The screen is covered with an extremely hard coating (2H hardness), which will keep consistent transparency even after many years of maintenance. The anti-infrared coating isolates infrared energy effectively and prevents tissue desiccation. Anti-static coating on the light screen surface prevents the attraction of floating particles which could absorb light.*



*The shell of Oricare L2700 Series Operating Lamps is made of an aluminum alloy, with outstanding heat dissipation capacity, which extends the LED elements working life and illuminating efficiency.*



*Sketch map of metal/non-metal shell for heat dissipation*

*High temperature will weaken an LED element's illuminating efficiency and shorten its life. Oricare L2700 Series Operating Room Lamps have very efficient heat dissipation, compared with systems that use a non-metal shell. The aluminum alloy shell helps to guarantee the surgical light will always be ready for the next procedure.*